



Innovate Therapeutic Care.



Innovate Therapeutic Care is more than your usual residential care provider

Taking a holistic approach to care, Innovate Therapeutic Care supports children and young people in journeying from high-cost residential care to a safe and secure place of permanency.

We work therapeutically with children and young people so that when they leave our residential care and exit our programme of support, their placement or reunification is far less likely to break down.

Securing better outcomes

As a social work-led service, we understand just how difficult it is to break the cycle of children and young people entering high-cost residential care. Family reunification is often impossible and the right foster carers are thin on the ground.

Innovate Therapeutic Care addresses these challenges. Bringing together therapists, educational psychologists and social care professionals, we work holistically with each young person to support a plan to step down to foster care provision, supportive independent living or family reunification..

Where foster care is the identified option, we find and match foster carers who are able to provide ongoing support and a place of permanence.

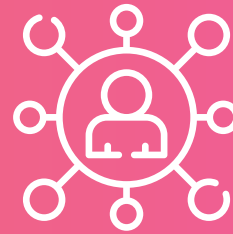
Crucially, our support does not stop once the young person leaves our residential care. Our team continues to be there for the child and their family/foster carer to ensure a smooth transition.

When supporting children to make the transition from residential care to a family environment, our care team work to three principles:



Child focused.

We make sure the child's voice is at the heart of everything we do and that having this knowledge informs our support.



Holistic.

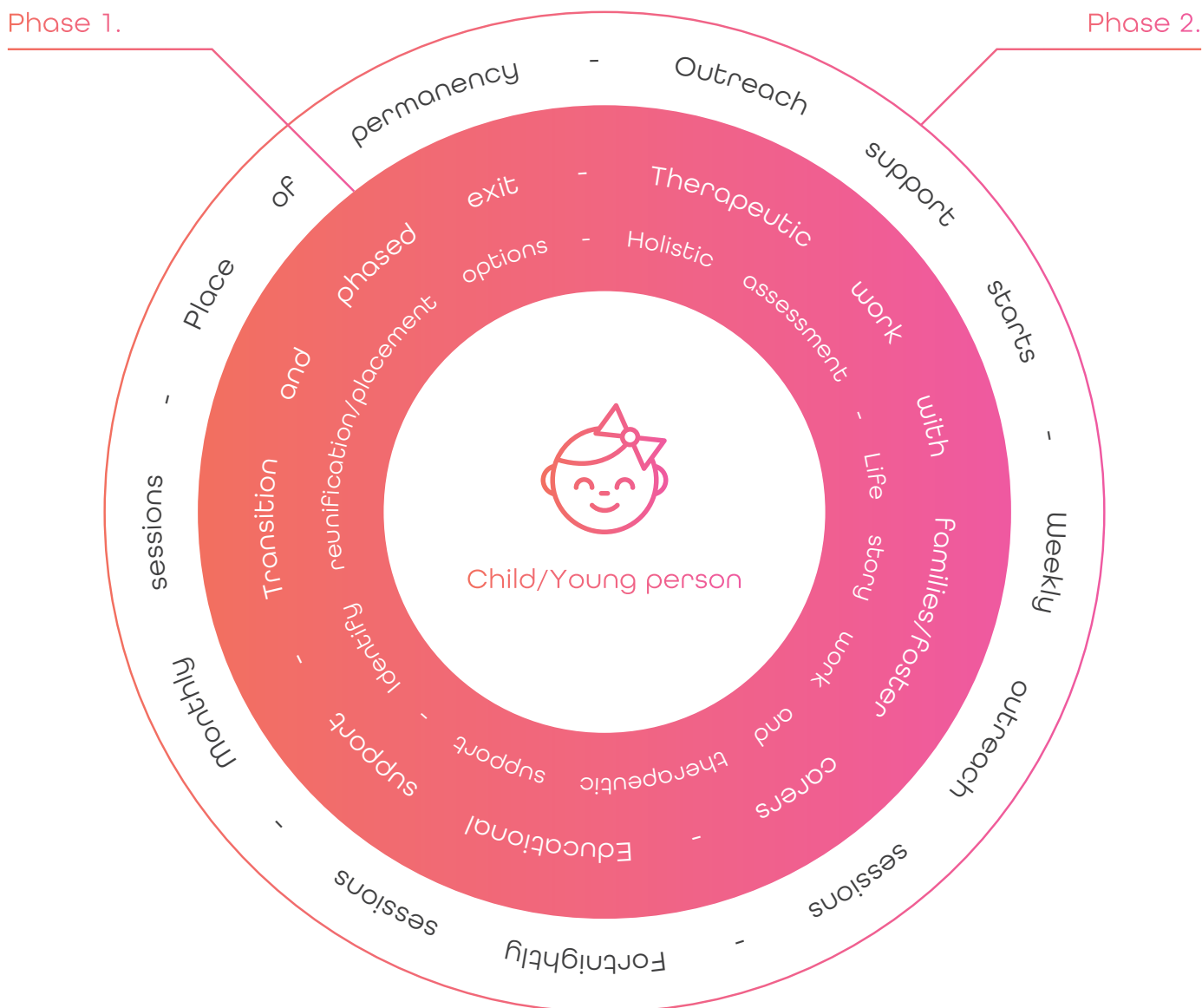
We take a whole person approach, introducing therapeutic and education support that is bespoke to each child and their carers.



Sustainable.

We give family and foster carers the support they need to offer a stable, long-term home, aiming to reduce the number of placement moves.

Intensive, targeted therapeutic residential care.



Phase 1.

Whilst in our residential care, we introduce therapeutic interventions that promote the resilience of the young person and give the parents/foster carers the support to create a stable placement.

Phase 2.

We create a bespoke support plan for each young person and their family/carer to promote stability. This is gradually phased-out so that parents/carers have the skills to continue to provide long-term care.

Supporting better placement outcomes.



Knowing the exact needs of every child and young person we support; our therapeutic residential care team work together to identify practical and achievable solutions for each young person.

Increasing resilience

Where family reunification is the aim, the team supports parents and/or carers in addressing their own emotional resilience to increase their parenting capacity. Therapeutic interventions enable the parent/carer to see their child is in need and that with the right support, behaviours and relationships can be changed to enable reunification.

In line with partner agency working, specialist mental health professionals and educational psychologists support each young person's emotional, learning and mental health needs.

Creating therapeutic foster care placements

Where a foster care placement is the best option for the child or young person, we can identify, assess, and recruit local foster carers. Those who, with the help of our team, are able to understand the care needs of the young person and offer them a stable long-term foster care placement. With an assessing social worker in our team, we can identify foster carers based on having an in-depth understanding of the care needs of each young person.

Once a foster carer has been appropriately matched, we work therapeutically with each young person and their foster carer to identify care needs and offer specialist support. This helps the foster carer understand the child's lived experience and enhances placement stability.

What makes us different...



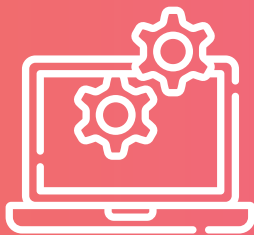
Accountable.

We are fully accountable for the quality of care we deliver to children and young people.



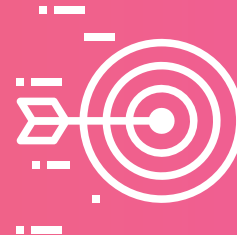
Experienced.

We are led by a senior management team who are qualified and experienced in children's residential care.



Familiar.

We are familiar with local authority recording systems since we deliver children's services and educational psychology projects throughout the country.



Focused.

Our focus is creating care plans that build healthy, resilient relationships that break the cycle of care and improve opportunities for young people.

Most importantly, we...



- Reduce placement moves
- Give young people a sense of belonging
- Enhance your in-house pool of foster carers
- Work with local authorities to make cost savings
- Support local authorities in identifying local education provision

Contact us

Find out how Innovate Services can work with you and your organisation.



Phone:
0330 9000 100



Web:
innovateservices.com



Email:
info@innovateservices.com

Innovate Services, 15 Friars Street, Ipswich, IP1 1TD